

## INSTALLATION INSTRUCTIONS

DESCRIPTION: Glass Rear Window Kit

PART NUMBER: B4J-K750A-T0

MODEL: 2021+ Wolverine R-Max4 and X4



### ⚠ WARNING

Please read and understand these instructions completely before installation to avoid possible injury, or damage to the accessory or vehicle.

### WARRANTY INFORMATION:

In the United States, see your Yamaha dealer for a copy of the Yamaha Genuine Parts and Accessories Limited Warranty.

### NOTICE:

Installation of this kit requires a torque wrench and should be performed by an authorized Yamaha dealer or a qualified mechanic.

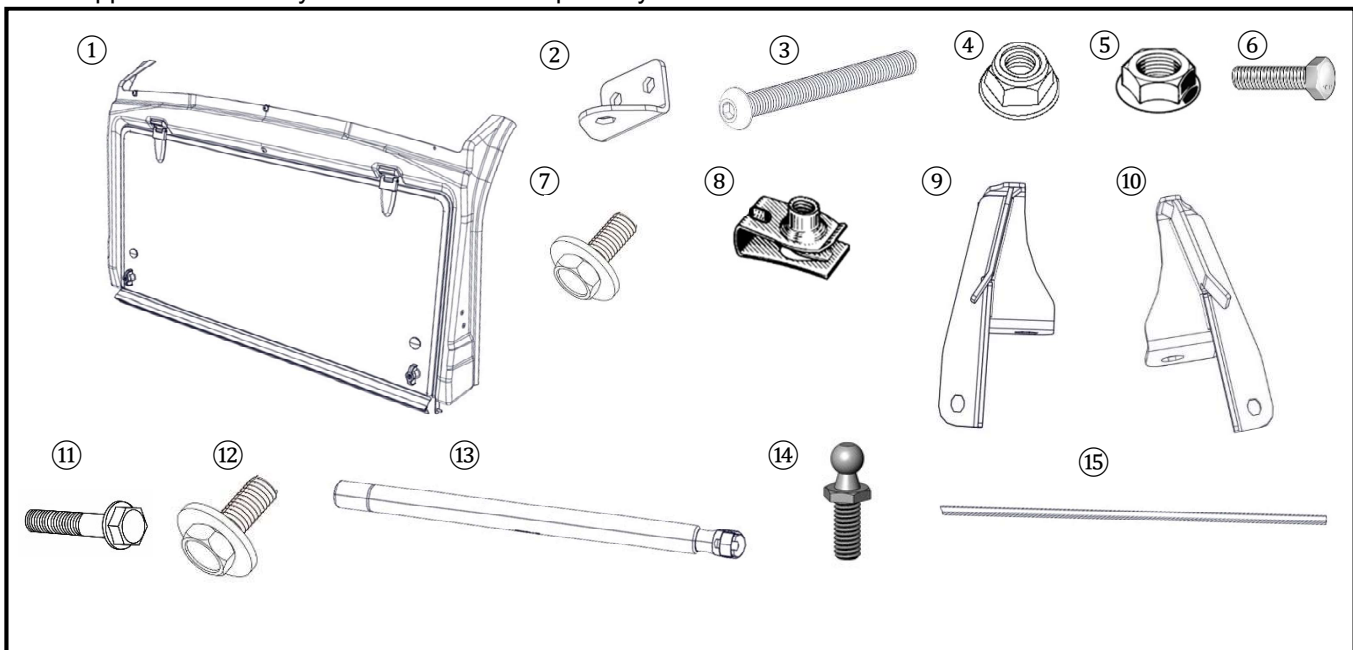
### DEALER OR INSTALLER:

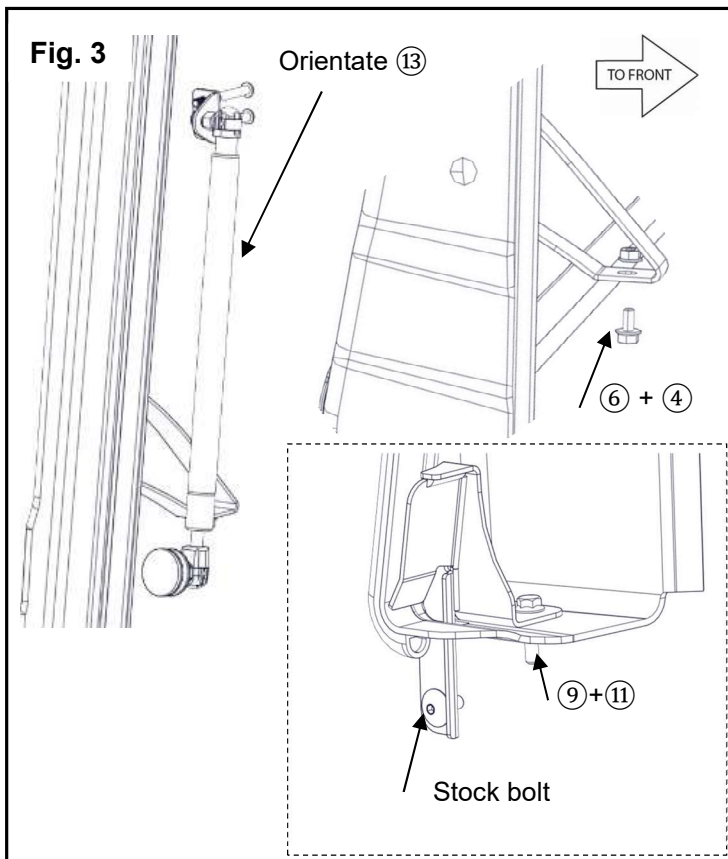
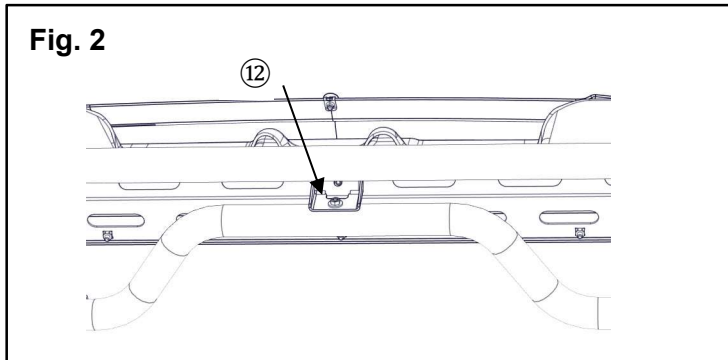
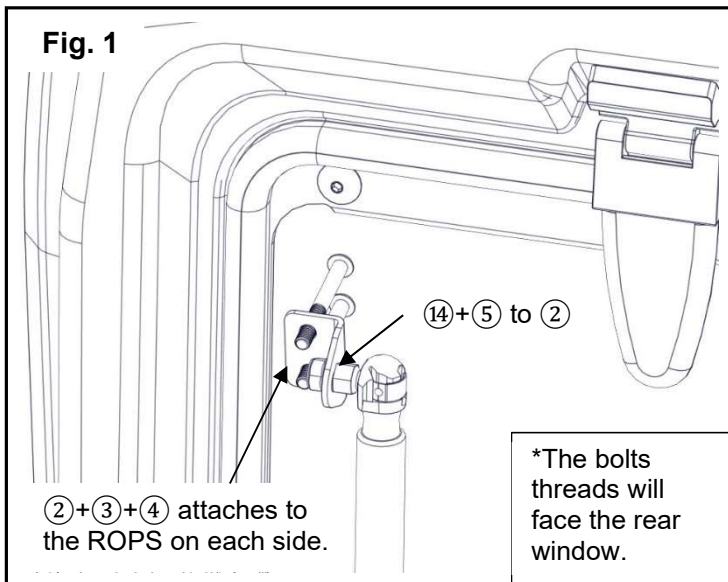
These instructions contain important information for future reference and *must* be given to the customer.

### PARTS LIST:

No.	Part Number	Description	Qty
--	<b>B4J-K750A-T0</b>	Glass Rear Window Kit	--
①	B4J-K832U-T0	Rear Window Assembly	1
②	BG4-F1798-V0	Upper Damper Bracket	2
③	92017-06055	M6x55 Button Head Screw	4
④	95702-06500	M6 Flanged Locking Nut	4
⑤	95602-08200	M8 Flanged Nut	2
⑥	95812-06012	M6x12 Hex Head Screw	2
⑦	90111-06105	M6x16 Hex Head Bolt with captive washer	3
⑧	90183-06825	M6 Spring Nut	3
⑨	BG4-F84BB-V0	Left Lock Bracket	1
⑩	BG4-F84BC-V0	Right Lock Bracket	1
⑪	95812-06025	M6x25 Flanged Hex Head Bolt	2
⑫	JW1-K6179-01	M6x20 Hex Head Screw with washer	1
⑬	BG4-F2210-V0	Gas Damper	2
⑭	BG4-F3541-V0	Ball Socket	2
⑮	BG4-H7237-V0	Lower Plate Seal	1

\* Part supplied with kit only and not available separately.





**Tip:** This kit requires the installation of the **Sun Top** (p/n B4J-K84A0-V0), **Cab Enclosure Front Glass** (p/n B4J-F83J0-T0).

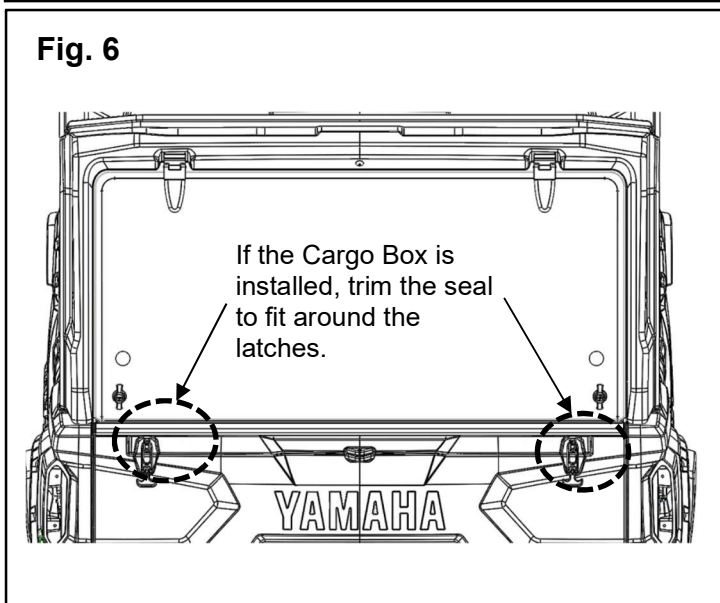
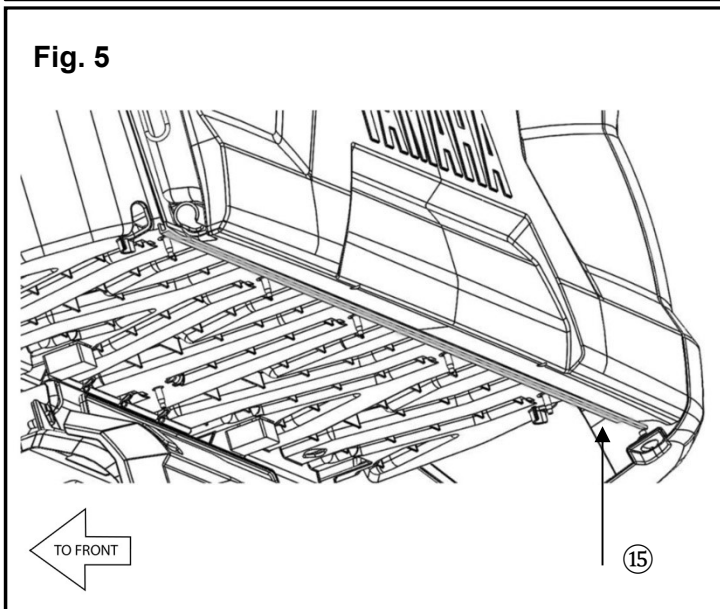
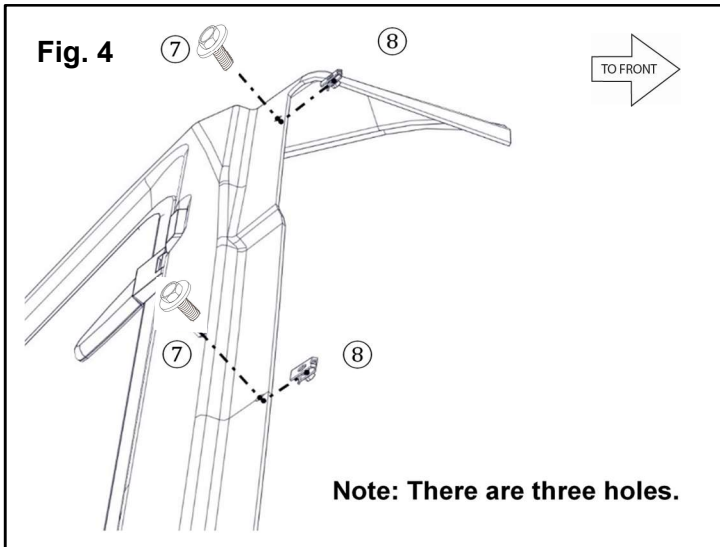
The **Rear Cab Enclosure Doors** (p/n B4J-K85A0-V0) are optional if the full cab enclosure is not being installed.

**PREPARATION:**

- Place the vehicle on a secure and level surface.
- Set the parking brake.
- Clean the mounting surfaces before beginning installation.
- Recommend that an assistant help with installation.
- This kit is installed **after** the Sun Top and the Rear Cab Enclosure Doors.

**INSTALLATION:**

1. Insert one ⑭ Ball Socket into each ② Upper Damper Bracket and thread on one ⑤ M8 Flanged Nut. (Fig. 1)
2. Place one ② Upper Damper Bracket on the ROPS and insert in two ③ M6x55 Button Head Screws and thread two ④ M6 Flanged Locking Nuts and torque to 5 Nm. (0.5 kg-m or 3.6 lb-ft)  
**Tip:** The threads face the rear of the vehicle. The brackets face the inside of the ROPS.
3. Torque the ⑭ Ball Socket to 10 Nm. (1.0 kg-m or 7.3 lb-ft) (Fig. 1).
4. Attach the second ② Upper Damper Bracket to the ROPS by following Steps 1 - 3. (Fig. 1)
5. Lay the ① Rear Window Assembly on the rear of the Wolverine and under the Sun Top.
6. Thread in ⑫ M6x20 Hex Head Screw with washer into the center hole in the ROPS. Torque to 5Nm (0.5 kg-m or 3.6 lb-ft) (Fig. 2)
7. Insert two ⑥ M6x12 Hex Head Screws into both enclosure brackets through the ROPS and thread on ④ M6 Flanged Locking Nuts. Torque to 5 Nm (0.5 kg-m or 3.6 lb-ft). (Fig. 3)
8. Mark the three upper mount holes on the Sun Top. Drill out the marked locations with a ¼ inch drill.
9. Insert three ⑧ M6 Spring Nuts across the top of the ① Rear Window Assembly holes with the threads facing in. (Fig. 4)
10. Thread one ⑦ M6x16 Hex Head Bolts with captive washer into each ⑧ Spring Nut and torque to 5Nm (0.5 kg-m or 3.6 lb-ft). (Fig. 5)
11. Lift the rear glass window and attach both ⑬ Gas Dampers to the ⑭ Ball Sockets on the ROPS and the rear window. (Fig. 3)
12. Remove the two stock bolts from the tailgate fender location. (Fig. 3 and 7)
13. Install the ⑨ Left Lock Bracket on the left side of the tailgate. Thread in one ⑪ M6x25 Flanged Hex Head Bolt through the ⑨ Left Lock Bracket and into the bed. Thread the stock bolt through ⑨ Left Lock Bracket and into the tail gate opening. (Fig. 3 and 7)



14. Install the ⑩ Right Lock Bracket by following the same process as in Step 13.
15. Torque the ⑨ and ⑩ Lock Bracket hardware to 5 Nm (0.5 kg-m or 3.6 lb-ft). (Fig. 3)
16. Push glass closed against seal. Loosen the set screw on the cam and position the window to the desired location to adjust the pressure the glass places against the seal. This adjusts the tension of the latch. (Fig. 7)  
Tighten set screws to set 'closed' position of the window against the seal.
17. Insert the ⑮ Lower Plate Seal on the underside of the tail gate. The flap points rearward. (Fig. 5)

**Note:** If the Cargo Box is installed, the window trim will need to be trimmed around the latches. Use the template in this instruction to make the cut. (Fig. 6)

**MAINTENANCE:**

Periodically, check torque on all hardware. If loose hardware is found, re-torque to specification.

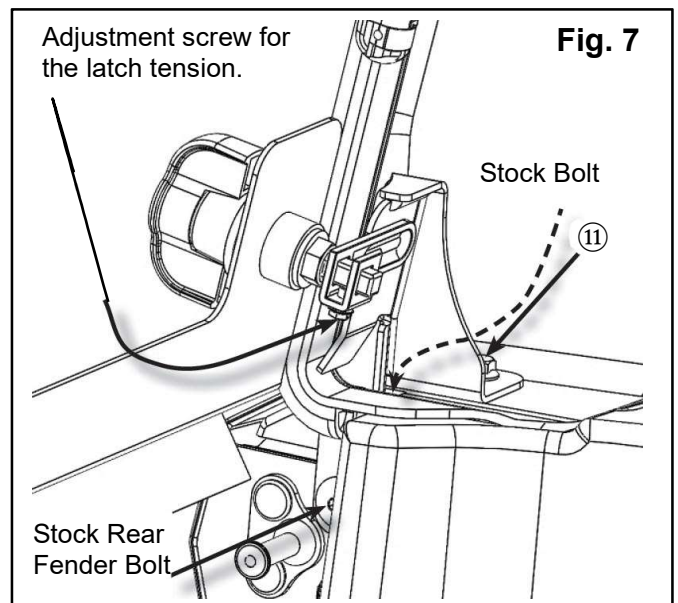
**CARE AND CLEANING:**

Clean painted metal parts with a clean soft cloth and mild soap and water solution. Rinse and dry.

**CUSTOMER SERVICE:**

For further information see your Yamaha dealer.

**ESTIMATED TIME TO INSTALL: 2.0 HRS.**



## Template - Rear Window Seal.

Mark seal to remove material from seal so that rear door latches do not interfere with seal.

